

# Funded Kindergarten Program Statement of Fees

## Kindergarten Services

Both the Australian and Queensland Governments are providing subsidies to support the delivery of kindergarten programs. For more information, please visit the Department of Education and Training's website at [www.earlychildhood.qld.gov.au/earlychildhood.html](http://www.earlychildhood.qld.gov.au/earlychildhood.html) or call 1800 4 KINDY (1800 454 639)

### This kindergarten service is an approved kindergarten program provider under the Queensland Kindergarten Funding Scheme

#### Kindergarten Program Details

<b>Service Type: Kindergarten</b>					
<b>Service Name:</b>	Craigslea Kindergarten				
<b>Address:</b>	23 Marban st	<b>Suburb</b>	Brisbane QLD	<b>Post Code</b>	4032
<b>Phone:</b>	07 33591827	<b>Fax:</b>	33593295		
<b>Web:</b>	www.craigsleakindy.com.au	<b>Email:</b>	craigsleakindy@bigpond.com.au		

#### Education Program Details

Building Waterfalls

#### Kindergarten Fees (information current as at 2/2/2016)

Total daily rate – cost to access the kindergarten program: <i>The amount listed should provide the minimum cost to access the kindergarten program, expressed by a daily rate.</i>	\$28 per day \$60  average weekly rate* <i>Please contact this service for any subsidies available (e.g. Health Care Card Subsidy). (*Calculated on e.g. 40 weeks per annum, adjust as required)</i>
List inclusions in the total daily rate: <i>(e.g. food, sunscreen, computer assisted learning)</i>	Kindergarten program resources and equipment
Enrolment conditions for access to the program – commitment to access the kindergarten service and other inclusions: <i>Detail what commitment is required for participation. Any enrolment conditions should explain any requirements for a child to access the kindergarten programing. minimum one term enrolment.</i>	e.g. Commitment to enrol in 5 days per fortnight for a term of 10/11 weeks.
Please note that information about the Australian Government's Child Care Benefit payments for eligible families attending registered care services is available from <a href="http://www.familyassist.gov.au/payments/family-assistance-payments">www.familyassist.gov.au/payments/family-assistance-payments</a>	

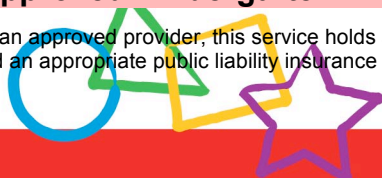
#### Additional Fees or Levies

Item and Purpose	Cost / Frequency	Tax deductible Y/N
Maintenance fund	\$25 per term	no

Please make your own enquiries regarding the currency of the information expressed by the program provider. Provider information does not represent the official position of the Queensland Government

#### Approved Kindergarten Program Providers

As an approved provider, this service holds a current Queensland licence for a centre based child care service, under the Queensland Child Care Act 2002 and an appropriate public liability insurance of at least \$10 million. For a service to be eligible to receive funding for kindergarten, the program must:

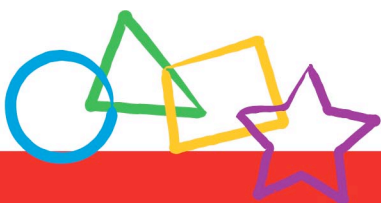


Giving children a flying start

# Funded Kindergarten Program Statement of Fees

## Kindergarten Services

- be provided to children who are at least 4 years of age by 30 June in their kindergarten year
- be delivered by a qualified early childhood education teacher
- be aligned with the Queensland Kindergarten Learning Guideline, or other education program approved by the Queensland Studies Authority
- be provided for at least 15 hours a week, 40 weeks per year, or a minimum of 600 hours over 37 weeks for services operated by non-state schools.



Giving children a flying start

**Toward**   
Tomorrow's Queensland

 **Queensland**  
Government